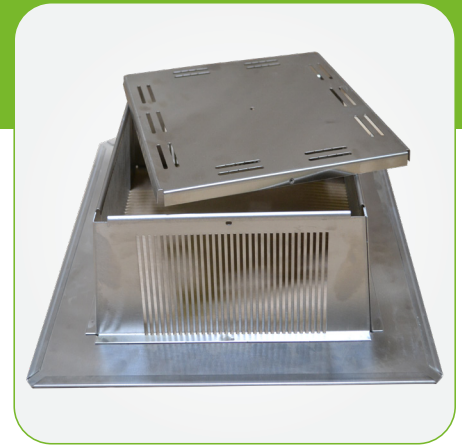


# Inspection Chamber + Extensions

Inspection chambers and extensions keep roof drains accessible and free of debris while promoting drainage through the entire green roof profile.

Extensions can be used to accommodate deeper systems.

Adding a locking mechanism is recommended for all installations, but especially in applications where the chambers may be exposed to high winds.



## FEATURES AND BENEFITS

- Can be installed with ballast or unballasted surround.
- Locking mechanism available
- Custom chambers available for overflow and intensive roof installations. Contact us for pricing and more information on customization options.

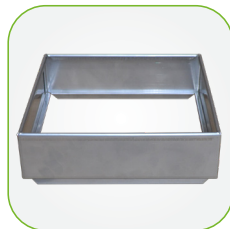
## PRODUCT DATA

<b>IC Material &amp; Coating</b>	18 ga stainless steel Epoxy coating available for all inspection chamber composites to reduce reflection
<b>IC Sizes</b>	11" x 11" x 4.75" 18" x 18" x 4.75"
<b>Extension Material</b>	20 ga stainless steel
<b>Extension Sizes</b>	1" 3" 8.5"
<b>Warranty</b>	10 years* <small>* Please note, exclusions include but are not limited to staining on aluminum edge and accessories</small>

**1" EXTENSION**



**3" EXTENSION**



**8.5" EXTENSION**



**LOCKING MECHANISM**

